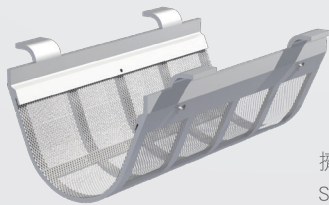


整粒機

SHAFT DRY GRANULATOR



擠篩網
Screen

+

THEORY +

Use two closed dry granulate claw to extrude the bigger and irregular granule toward outside of screen, then to form the required even granule.

FEATURE +

- Multi-function for milling, wet & dry granulation.
- Simple structure is easy to assemble and clean.
- Easy for screen renewing and operating.
- Different adjustable speed for different requirement of product.
- Less dust, low temperature, low noise and easy cleaning.
- Can be integrated with vacuum suction device.
- Special closed shaft design to prevent the black spot and ensure product quality.
- Safety device to protect the operator.
- 360° screen design enables better and faster milling result, output capacity is bigger than other model.
- All the design and manufacture are qualified cGMP standard and FDA requirement.

原理介紹 +

利用兩支密閉式整粒爪，將較大且不規則顆粒壓過網子形成所須之均勻顆粒。

功能 +

- **解碎**：片劑及膠囊回收，或將結塊之粉末經刀片粉碎成原來的粉末。
- **粉碎**：將較硬、粗之原料粉碎粉末。
- **整粒**：將乾燥好之不規則顆粒，整粒成較均勻之顆粒。
- **濕式造粒**：加濕之粉末，擠出成顆粒。

適用產業 +

西藥、中藥製劑、健康食品、生物科技...等。

特點 +

- 粉碎、濕式造粒、乾式整粒融合一體。
- 構造簡單，分解清洗容易。
- 更換網子容易，操作簡單。
- 有不同的速度，供不同產品生產需求而調整。
- 低塵、低溫、低噪音、清洗容易。
- 可配合真空吸料中，粉碎整粒使用。
- 特殊轉軸密封設計，不產生污點，確保產品品質。
- 設計及製造均合乎cGMP規範及美國FDA要求。
- 附安全裝置，操作者可放心使用。
- 因造粒網360°開放，比其他機型能力大。

FUNCTION +

- **Crushing**: recover tablet and capsule, or crush the lump into original powder.
- **Milling**: mill the hard or thick raw materials into powder.
- **Dry granulation**: granulate irregular size of granule to even granule after drying.
- **Wet granulation**: granulate the wet powder into granule.

規格表 | SPECIFICATION

| 型號 Model | 產能：公斤/小時 Capacity : Kgs/hr | 尺寸 Size(WxLxH) (MM) |
|-------------|-------------------------------|---------------------------|
| YS-SG-1 | 80-150 | 700X850X1350 |